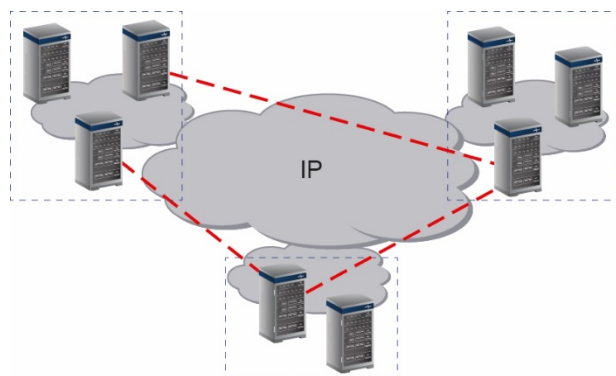


INTRON-D *plus*

IP System Gateway



Features and Functions

- IP-based interconnection of INTRON-D *plus* systems or system networks
- Point-to-point interface between two system networks
- Configuration of several IP system gateways for each DXC possible
- Several audio channels can be configured for each IP system gateway
- Intercom, PA/GA and control functions available via the IP system gateway
- Greater independence between sub-areas possible than with a system network
- Configuration via Config Manager for INTRON-D *plus*

Each DXC exchange control board of the INTRON-D *plus* communication and public address system from INDUSTRONIC provides one or several optional IP system gateways. This enables the IP-based interconnection of independent INTRON-D *plus* systems or system networks.

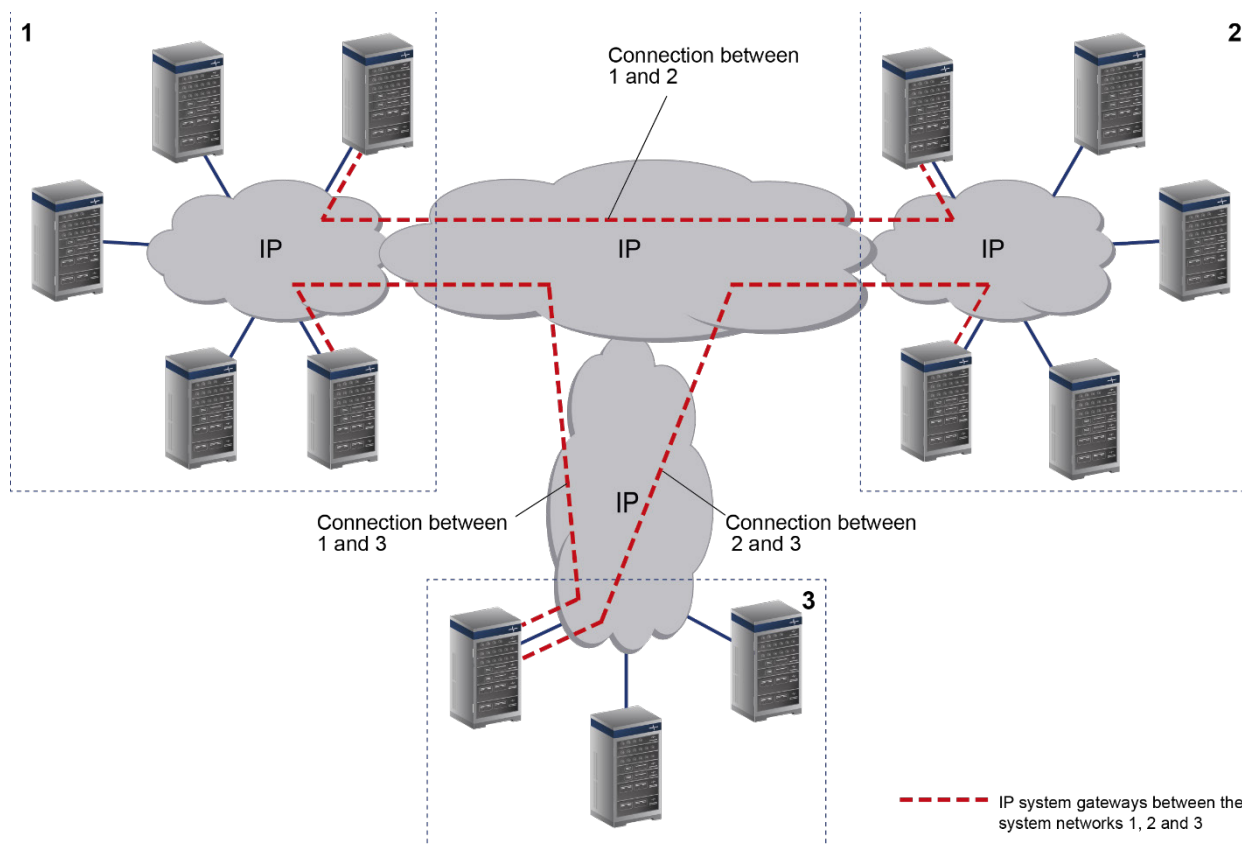
Typical application examples are large industrial complexes or chemical parks. With increasing size, it becomes difficult to maintain such systems efficiently on site as a single system network. Changing or expanding a large industrial plant also requires a high level of logistical coordination on site, due to the close dependencies that come with a system network.

However, sub-areas of industrial plant are often structurally separated, so that only a few overall functions are required in terms of communication and alarms. Therefore, a large system network is not necessary here. In this case, we recommend dividing the whole plant into several smaller system networks and interconnecting them via IP system gateways.

Up to now, such interconnection of system networks could only be implemented by using analog interfaces. If an INTRON-D *plus* system is available on both sides of the interconnection, the IP system gateway offers an alternative option that does not require additional hardware and at the same time enables significantly more functions than an analog interconnection.

Dividing the whole plant into smaller system networks has several advantages: separate configuration files and thus independent maintenance and also independent extensions of sub-areas – as far as no overall functions are concerned. Furthermore, different software versions and thus also independent software updates are possible in the sub-areas.

To interconnect two independent systems or system networks via IP, one IP system gateway must be configured in each system network. This requires the corresponding activations in each system network.



Interface

- RJ45 Ethernet interface on the DXC exchange control board

Functions

- All standard communication functions of the INTRON-D *plus* (PA, TW, handsfree, duplex)
- Several parallel communication connections possible
- Priority control of communication connections (200 priorities)
- Overall pre-busy signaling
- Connections can also be established via dial keypad
- Overall half-duplex conferences
- Overall group calls, can also be selected dynamically
- All call
- Overall warning and alarm functions
- Overall control functions (e.g. access or flashing warning beacon control)
- Overall fault indication

Order Data	Description	Type Number
	ACT-IP System Gateway INTRON-D <i>plus</i> Activation of one IP system gateway connecting one INTRON-D <i>plus</i> system network with another INTRON-D <i>plus</i> system network	101-500-001
	ACT-10 IP System Gateway I/O Elements Activation of 10 input/output signals for control and voice functions via one IP system gateway	101-500-002
	ACT-IP System Gateway VoIP Channel Activation of one VoIP channel for audio transmission via one IP system gateway	101-500-003

INDUSTRONIC®
 Industrie-Electronic GmbH & Co. KG
 Carl-Jacob-Kolb-Weg 1
 97877 Wertheim / Germany

Phone: +49 9342 871-0
 Fax: +49 9342 871-565

info@industronic.de
www.industronic.com