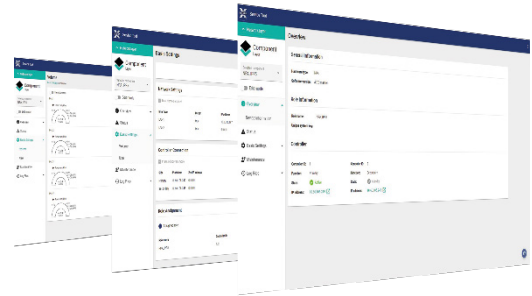




XST SERVICE TOOL

FOR EASY COMMISSIONING AND MAINTENANCE

With the INTRON-X Service Tool you have all maintenance functions right at your fingertips. The service staff can easily and securely access and view the real-time status of INTRON-X modules and IP terminal devices within the system by using the local service interface or network interface of the IP components.



- Intuitive user interface for commissioning and maintenance
- Parallel access to several IP components
- Diagnostic and test functions
- Implementation of software updates and adjustment of basic settings
- Integrated help with suitable information and descriptions for each menu item

PC CONFIGURATION AND SYSTEM REQUIREMENTS

Operating system	Microsoft® Windows® 8/10
Processor	1 GHz
RAM	2 GB
Hard disk space	500 MB
Screen size	Min. 15", 17" recommended
Screen resolution	Min. 1280 x 1024 px
(Network) Interfaces	USB port (USB 2.0, backward compatible to USB 1.1) Ethernet (for connection of IP components via network)

ORDER DATA

Type number	100-710-100
--------------------	-------------

OVERVIEW

- | | |
|---|---|
| 1 | Header with the name and type of the selected component |
| 2 | Layer selection
(Network layer or component layer) |
| 3 | Navigation menu with submenus
(Overview, Status, Basic Settings, Maintenance, Log Files) |
| 4 | Input/display area |