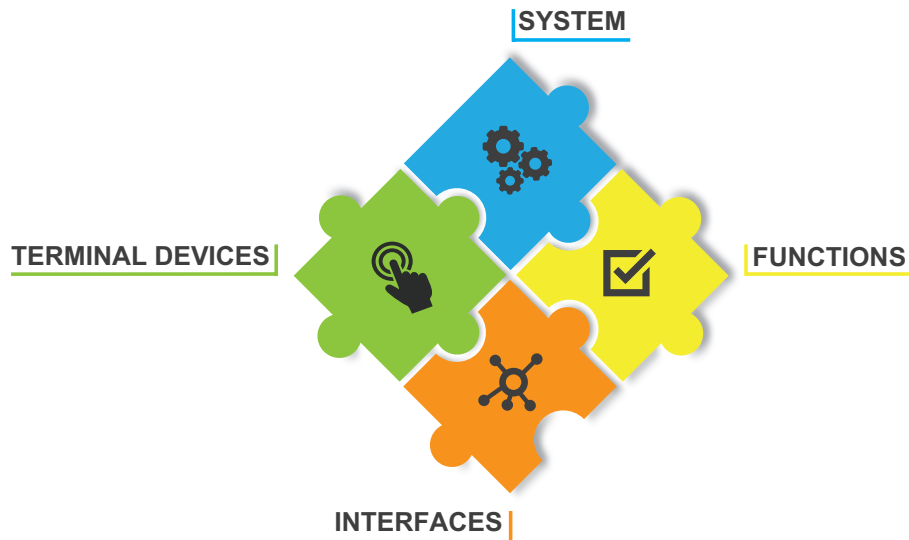


# INTRON-D plus ACTIVATION MODEL



## FEATURES TAILORED TO YOUR REQUIREMENTS

With INDUSTRONIC's activation model for the INTRON-D plus system up to software version 7.x.x you have the flexibility to design your Intercom, PA/GA and PA system according to your project-specific requirements. Numerous standard functions are already included in the activation Controller DXC. Should you require additional functionality, simply choose features from four different categories which best match your project requirements.

Features from the following categories can be activated:

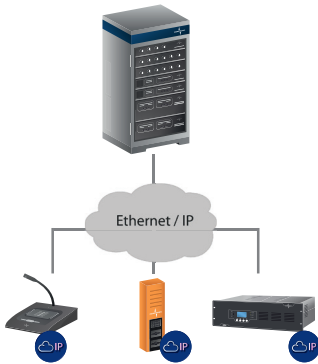
- System
- Terminal Devices
- Functions
- Interfaces

Activations apply to the entire system and are valid for an unlimited time. You can expand your functional scope at any time allowing your system to grow with your requirements.

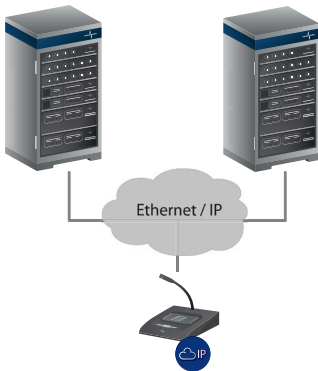
- Flexible use of activations within a system
- Mix and match functions according to your project requirements
- Expandable at any time
- Safe investment - use without time limitation
- Centralized activation via network
- Numerous standard functions already included in the activation Controller DXC



<b>Type</b>	ACT-Controller DXC
<b>Description</b>	Activation of one DXC with standard functions
<b>Type number</b>	101-100-001
<b>Further information</b>	<p>Standard functions include:</p> <ul style="list-style-type: none"> <li>■ Direct Two-way Communication</li> <li>■ Dynamic Two-way Communication</li> <li>■ Group call</li> <li>■ All call</li> <li>■ Dynamic Group Call</li> <li>■ Page &amp; CallBack</li> <li>■ Call Storage</li> <li>■ MultiControl Group</li> <li>■ Parallel Group</li> </ul>



<b>Type</b>	ACT-IP Device
<b>Description</b>	Activation for the connection of one INDUSTRISTRONIC IP device to the INTRON-D <i>plus</i> system
<b>Type number</b>	101-100-002



<b>Type</b>	ACT-IP Device connected redundantly
<b>Description</b>	Activation for a redundant connection of one INDUSTRISTRONIC IP device to the INTRON-D <i>plus</i> system
<b>Type number</b>	101-100-004



## TERMINAL DEVICES



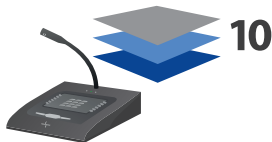
<b>Type</b>	ACT-NCP Base
<b>Description</b>	Activation for one INDUSTRONIC IP intercom station of the NCP series
<b>Type number</b>	101-200-001
<b>Further information</b>	Data sheets DAT-351-600-100, DAT-351-650-100



<b>Type</b>	ACT-NCP 200 Buttons
<b>Description</b>	Activation of 200 buttons for INDUSTRONIC IP intercom stations of the NCP series
<b>Type number</b>	101-200-003
<b>Further information</b>	Data sheets DAT-351-600-100, DAT-351-650-100



<b>Type</b>	ACT-AP 6 Operating Layers
<b>Description</b>	Activation of 6 operating layers with up to 120 configurable buttons for the INDUSTRONIC IP intercom station of the AP series
<b>Type number</b>	101-200-201
<b>Further information</b>	Product data sheet PDT-302-051-000



<b>Type</b>	ACT-AP 10 Operating Layers
<b>Description</b>	Activation of 10 operating layers with up to 200 configurable buttons for the INDUSTRONIC IP intercom station of the AP series
<b>Type number</b>	101-200-202
<b>Further information</b>	Product data sheet PDT-302-051-000



<b>Type</b>	ACT-DUSTRON Basic Communication
<b>Description</b>	Activation of one INDUSTRONIC app DUSTRON with all communication functions for use within the INTRON-D <i>plus</i> system
<b>Type number</b>	101-200-301
<b>Further information</b>	Data sheet DAT-100-742-100



<b>Type</b>	ACT-DUSTRON Extension Control
<b>Description</b>	Activation to extend the INDUSTRONIC app DUSTRON with PA/GA and control functions for use within the INTRON-D <i>plus</i> system
<b>Type number</b>	101-200-302
<b>Further information</b>	Data sheet DAT-100-742-100



<b>Type</b>	ACT-DUSTRON Extension Service
<b>Description</b>	Activation to extend the INDUSTRONIC app DUSTRON with maintenance functions for use within the INTRON-D <i>plus</i> system
<b>Type number</b>	101-200-303
<b>Further information</b>	Data sheet DAT-100-742-100

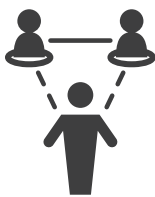


<b>Type</b>	ACT-NPA Speaker Circuit Monitoring
<b>Description</b>	Activation of speaker circuit monitoring for the INDUSTRONIC IP-based PA unit of the NPA series
<b>Type number</b>	101-200-101
<b>Further information</b>	Data sheet DAT-302-140-100

## FUNCTIONS



<b>Type</b>	ACT-Conference
<b>Description</b>	Activation of one conference channel within the INTRON-D <i>plus</i> system
<b>Type number</b>	101-300-001
<b>Further information</b>	Functional data sheet FDA-330-003-007



<b>Type</b>	ACT-Switchboard Call
<b>Description</b>	Activation of the switchboard call function for one intercom station within the INTRON-D <i>plus</i> system
<b>Type number</b>	101-300-002
<b>Further information</b>	Functional data sheets FDA-330-003-009, -010, -011, -012, -013



<b>Type</b>	ACT-Call Request Control
<b>Description</b>	Activation of the call request control function for one intercom station within the INTRON-D <i>plus</i> system
<b>Type number</b>	101-300-003
<b>Further information</b>	Functional data sheet FDA-330-003-017



<b>Type</b>	ACT-Warning Control 10
<b>Description</b>	Activation of 10 warning sequences to set up warning scenarios within the INTRON-D <i>plus</i> system
<b>Type number</b>	101-300-004
<b>Further information</b>	Functional data sheet FDA-330-003-018



<b>Type</b>	ACT-Time Control
<b>Description</b>	Activation of one time sequence to set up time-controlled scenarios within INTRON-D <i>plus</i> system
<b>Type number</b>	101-300-005
<b>Further information</b>	Functional data sheet FDA-330-003-020



<b>Type</b>	ACT-2 IAP VoIP Channels
<b>Description</b>	Activation of two VoIP channels for the internal audio processing function within the INTRON-D <i>plus</i> system
<b>Type number</b>	101-300-101
<b>Further information</b>	Data sheet DAT-101-300-101

## INTERFACES



<b>Type</b>	ACT-E-mail Notification
<b>Description</b>	Activation of the e-mail notification function within the INTRON-D <i>plus</i> system
<b>Type number</b>	101-400-001



<b>Type</b>	ACT-SNMP Interface
<b>Description</b>	Activation of one SNMP interface within the INTRON-D <i>plus</i> system
<b>Type number</b>	101-400-101
<b>Further information</b>	Data sheet DAT-100-720-500, functional data sheets FDA-100-720-500, FDE-100-720-500



<b>Type</b>	ACT-SIP Interface
<b>Description</b>	Activation of one SIP interface within the INTRON-D <i>plus</i> system
<b>Type number</b>	101-400-201
<b>Further information</b>	Data sheet DAT-100-720-200



<b>Type</b>	ACT-SIP VoIP Channel Telephony
<b>Description</b>	Activation of one SIP VoIP channel for telephony applications within the INTRON-D <i>plus</i> system
<b>Type number</b>	101-400-202



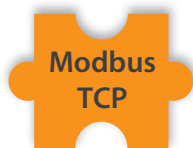
<b>Type</b>	ACT-SIP VoIP Channel Voice Recording
<b>Description</b>	Activation of one SIP VoIP channel for voice recording within the INTRON-D <i>plus</i> system
<b>Type number</b>	101-400-203



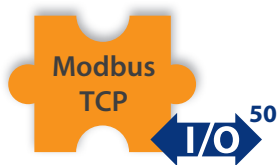
<b>Type</b>	ACT-CANopen Interface
<b>Description</b>	Activation of one CANopen interface within the INTRON-D <i>plus</i> system
<b>Type number</b>	101-400-301



<b>Type</b>	ACT-100 CANopen I/O Elements
<b>Description</b>	Activation of 100 CANopen input/output signals for control and voice functions within the INTRON-D <i>plus</i> system
<b>Type number</b>	101-400-302



<b>Type</b>	ACT-Modbus TCP Interface
<b>Description</b>	Activation of one Modbus TCP interface within the INTRON-D <i>plus</i> system
<b>Type number</b>	101-400-401
<b>Further information</b>	Data sheet DAT-100-720-400, functional data sheet FDA-100-720-400



<b>Type</b>	ACT-50 Modbus TCP I/O Elements
<b>Description</b>	Activation of 50 Modbus TCP input/output signals for control and voice functions within the INTRON-D <i>plus</i> system
<b>Type number</b>	101-400-402
<b>Further information</b>	Data sheet DAT-100-720-400, functional data sheet FDA-100-720-400



<b>Type</b>	ACT-IP-System Gateway
<b>Description</b>	Activation of one IP system gateway connecting one INTRON-D <i>plus</i> system to another INTRON-D <i>plus</i> system
<b>Type number</b>	101-500-001
<b>Further information</b>	Data sheet DAT-101-500-001



<b>Type</b>	ACT-10 IP System Gateway I/O Elements
<b>Description</b>	Activation of 10 input/output signals for control and voice functions via one IP system gateway
<b>Type number</b>	101-500-002
<b>Further information</b>	Data sheet DAT-101-500-001

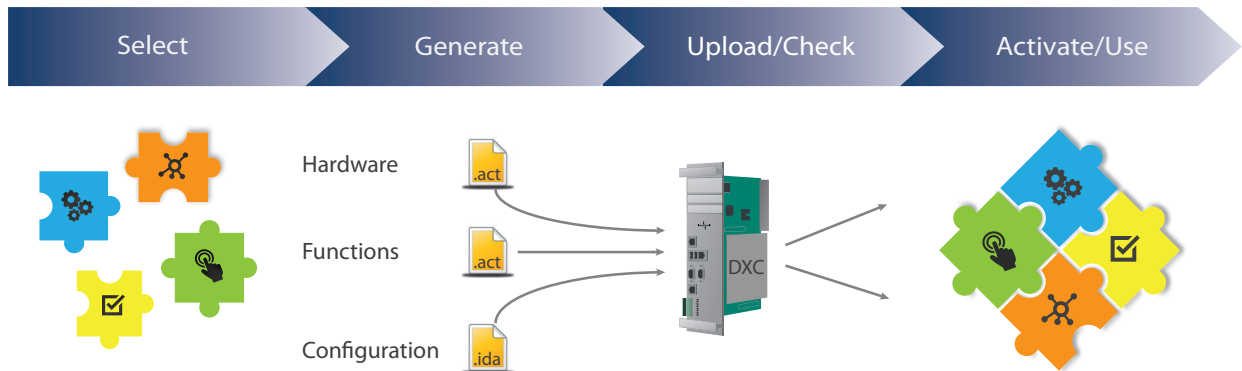


<b>Type</b>	ACT-IP System Gateway VoIP Channel
<b>Description</b>	Activation of one VoIP channel for audio transmission via one IP system gateway
<b>Type number</b>	101-500-003
<b>Further information</b>	Data sheet DAT-101-500-001

## ACTIVATION PROCEDURE

Together we identify the suitable system features for your system according to your project-specific requirements first. Then, we generate the required files which are uploaded to the system, checked and are finally activated.

The following illustration gives a schematic overview of the activation procedure.



After the activation you can take full advantage of any previously selected system features within the system.

If your project and your requirements grow, your system simply grows with it.

Additional system features or terminal devices can be easily integrated later on.

© INDUSTRONIC