



NCP 001 D

# IP PC INTERCOM STATION

## WITH CUSTOMIZABLE USER INTERFACE

The IP PC intercom station is especially designed for use in state-of-the-art control rooms. The software runs on a PC with Microsoft® Windows® 10/11. Operation is possible via mouse or via optional touch screen.

Its connection and health status is constantly monitored, logged and flexibly forwarded system-internally and to third-party systems.



- Graphical user interface divided into clearly structured areas and layers
- Management of up to 2000 buttons
- Individual background images
- Display of up to 10 video streams at the same time
- Display of detailed fault information
- Audio bandwidth of up to 16 kHz
- Echo cancellation (EC)
- Automatic gain control (AGC) for microphone
- Speaker and microphone volume adjustable via user interface
- 2 Ethernet interfaces for redundant network connection
- Self-diagnostics by monitoring microphone and network connectivity

## OTHER FEATURES

Intuitive user interface and clear indication of current events

Software can run exclusively or in window mode

Design of user interface can be configured via the INDUSTRONIC configuration software Config Manager X

Changes in configuration can also be performed on site using the Config Manager X (e.g. number, layout, labeling and functions of the buttons, signaling, user interface layout)

Status indications:

Connection to the system

Redundancy and availability status

Faults

Microphone active while connection is established

Speaker or microphone muted

Confirmation prompt prior to alarm start

Dial keypad

Call history and current call requests

Various screen sizes and resolutions

Support of two monitors when application runs in window mode

## VIDEO INTEGRATION

The NCP enables the seamless integration of live video streams.

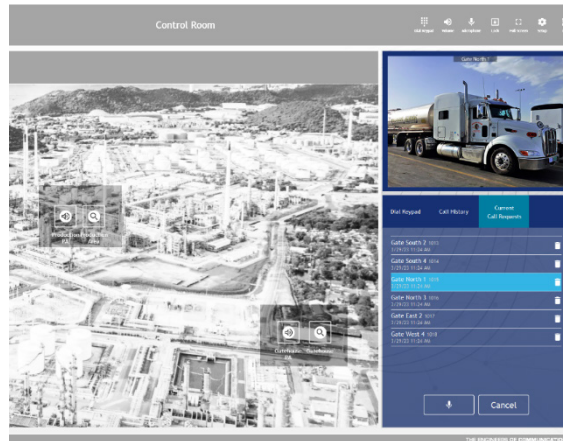
Up to 10 video streams can be displayed at the same time in different layouts clearly arranged on the NCP's graphical user interface.

In this way, live video streams are transmitted directly to the control room and simplify, for example, access control of the area.

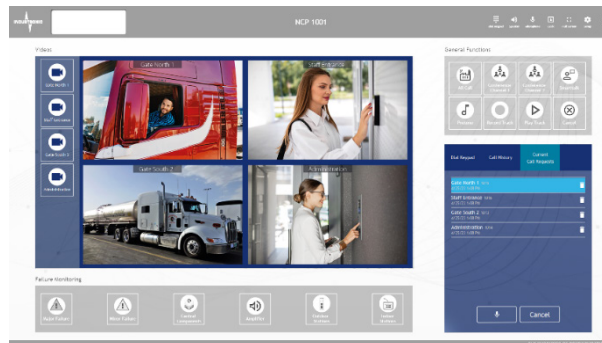
The live video streams can be invoked in three ways:

- Automatically upon call request or call acceptance (e.g. incoming call request of an intercom station with camera)
- Automatically during an outgoing audio connection from the NCP to an intercom station with camera
- Manually via a button on the NCP's graphical user interface

## APPLICATION EXAMPLE ACCESS CONTROL CALL REQUEST CONTROL IN SINGLE LAYOUT



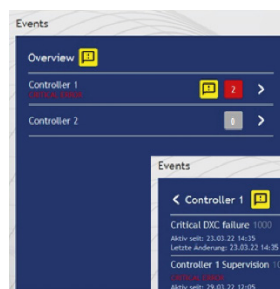
## CALL REQUEST CONTROL IN GRID LAYOUT



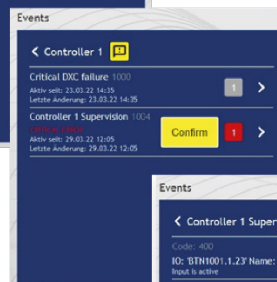
## FAULT INDICATION

The NCP enables the display and confirmation of fault messages of the entire system.

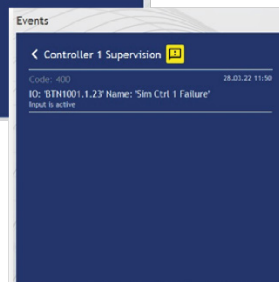
- Structured display of all active fault messages at various detail levels from the system overview to the fault details of the monitored devices
- Clear signaling of pending fault message confirmations with guided navigation and direct confirmation in the view



**Level 1 Overview**  
Displaying all active fault messages in the entire system



**Level 2 Events**  
List of all active fault messages in the segment



**Level 3 Error Codes**  
Displaying the specific error codes of the fault message

## COMPONENTS

The components listed below can be ordered from **INDUSTRONIC** in different sales packages. If hardware is provided by the customer, we recommend consulting **INDUSTRONIC** to check the compatibility of the equipment.

If hardware from the customer or from third-party suppliers is used, **INDUSTRONIC** assumes no guarantee for the reliable functioning of the NCP software.



<b>Type</b>	1 NIPC 004
<b>Description</b>	PC with Windows® 10 IoT Enterprise LTSC, Intel® Core™ i3, 4 GB RAM, SSD 120 GB
<b>Type Number</b>	351-100-400



<b>Type</b>	19 NTMD 003
<b>Description</b>	19" touch screen monitor with stand and bracket for mounting the PC of 1 NIPC 001, 1 NIPC 002 and 1 NIPC 004 series
<b>Type Number</b>	351-200-400



<b>Type</b>	24 NTMD 001
<b>Description</b>	24" touch screen monitor with stand
<b>Type Number</b>	351-200-500



<b>Type</b>	1 NMID 001
<b>Description</b>	Desktop microphone with Push-to-Talk button (PTT button) for connection to a PC via a 1.4 m (4.59 ft) long USB cable
<b>Type Number</b>	001-002-013



<b>Type</b>	1 NMID 002
<b>Description</b>	Desktop microphone with Push-to-Talk button (PTT button) for connection to the handset of the 1 NHAS 001 series via a 1.6 m (5.25 ft) long RJ10 cable
<b>Type Number</b>	001-002-014



<b>Type</b>	2 NSPD 002
<b>Description</b>	Desktop speakers for connection to a PC via a 1 m (3.28 ft) long USB cable, 100 Hz to 18 kHz
<b>Type Number</b>	202-523-500



<b>Typ</b>	30 NSPD 002
<b>Description</b>	Desktop speakers for connection to the handset of the 1 NHAS 001 series via a 1.5 m (4.92 ft) long RJ10 cable, 170 Hz to 20 kHz
<b>Type Number</b>	202-523-600



<b>Typ</b>	1 NHAS 001
<b>Description</b>	Handset with Push-to-Talk button (PTT button) for connection to a PC via a 2 m (6.56 ft) long USB cable
<b>Type Number</b>	070-007-134



<b>Type</b>	1 NHES 001
<b>Description</b>	Monaural headset with flexible gooseneck microphone, USB interface with PTT button, for operation at an IP PC intercom station NCP 001 D. Interface: USB-A
<b>Type Number</b>	070-013-003



<b>Type</b>	1 NHES 001/H
<b>Description</b>	Monaural headset with flexible gooseneck microphone, for operation at an IP PC intercom station NCP 001 D. For hygiene reasons, we recommend a personal headset for every employee. To operate the headset you require one single USB interface with PTT button (included in type number 070-013-003). Interface: Binder plug
<b>Type Number</b>	070-013-002

## TECHNICAL DATA

### ELECTRICAL DATA

<b>Power supply</b>	100 V AC to 240 V AC, 50/60 Hz
<b>Power consumption</b>	Max. 60 W Typical 40 W

### MINIMUM REQUIREMENTS FOR PC HARDWARE\*

<b>Processor</b>	Intel® Core™ i3 processor (or comparable)
<b>Mass storage</b>	120 GB HDD or SSD
<b>RAM</b>	4 GB
<b>Graphics</b>	Intel® HD 4400 (or comparable), DirectX 11
<b>Graphics interface</b>	DVI, HDMI or DisplayPort (in correspondence to the monitor)
<b>Interfaces</b>	4 x USB 3.0
<b>Network interfaces</b>	2 x LAN 100 MBit

\*Dedicated hardware recommended. One audio component must be exclusively available for NCP applications.

### NETWORK REQUIREMENTS

IPv4 network

Support of UDP, TCP, RTP and RTCP protocols

Quality of Service (QoS)

Ideal latency value: < 20 ms (max. 50 ms)

Jitter: max. 10 ms

10Base-T/100Base-TX Ethernet (IEEE 802.3), 100 MBit/s  
recommended

200 kBit/s basic bandwidth and 200 kBit/s for active audio channel

### VIDEO INTEGRATION

<b>Camera type</b>	Video-over-IP
<b>Video streams</b>	Up to 10 at the same time (4 when using the standard NCP hardware)
<b>Supported video codec</b>	Motion JPEG (MJPEG)
<b>Streaming</b>	Via HTTP/HTTPS protocol
<b>Max. frame rate (live display)</b>	15 FPS

## OPERATING SYSTEMS

Software runs under:

Microsoft® Windows® 10 IoT Enterprise

Microsoft® Windows® 10 Pro

Microsoft® Windows® 11 IoT Enterprise

Microsoft® Windows® 11 Pro

## ACTIVATIONS

Description	Type Number
ACT-NCP Base Activation for one INDUSTRONIC IP intercom station of the NCP series	101-200-001
ACT-NCP 200 Buttons Activation of 200 buttons for INDUSTRONIC IP intercom stations of the NCP series	101-200-003
ACT-NCP Video Activation of the video function for one INDUSTRONIC IP intercom station of the NCP series	101-200-005
NCP Base & Buttons Activation for one INDUSTRONIC IP intercom station of the NCP series with 200 buttons	101-201-001
NCP Base, Buttons & Video Activation of the video function for one INDUSTRONIC IP intercom station of the NCP series	101-201-002

## ORDER DATA

Type	Software	Speaker		Microphone		Handset	PC	Monitor		Type Number
		2 NSPD 002	30 NSPD 002	1 NMID 001	1 NMID 002			1 NHAS 001	1 NIPC 004	
NCP 001 S	x									351-600-100
NCP 001 S-A01	x	x		x						351-601-100
NCP 001 S-A02	x		x		x	x				351-601-200
NCP 001 D-A01C04M1901	x	x		x			x	x		351-610-400
NCP 001 D-A02C04M1901	x		x		x	x	x	x		351-610-500
NCP 001 D-A01C04M2401	x	x		x			x		x	351-610-600

© INDUSTRONIC